

NEXT GENERATION HIGH LOW SYSTEM

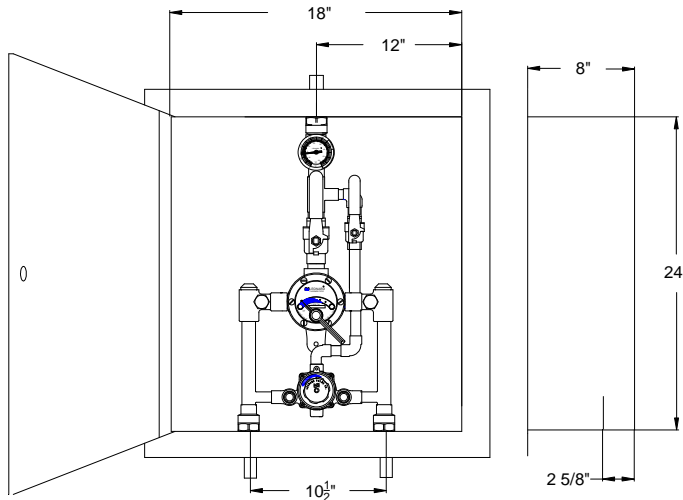
ECO-MIX™

Submittal Data Sheet S-1233F-LF

August, 2018

TM-186-820B-LF _____ - _____ Cabinet Assembly

- Large Type TM Thermostatic water mixing valve, adjustable high temperature limit stop*, inlet checkstops, wall support, outlet ball valve
- Small Type TM Thermostatic water mixing valve, adjustable high temperature limit stop*, inlet checkstops, outlet ball valve
- Maximum operating pressure: 125 PSI (860 KPA)
- 1" inlets, 1 1/4" outlet (25mm X 32mm)
- 1 GPM (3.8 l/min) minimum flow capacity
- Color-coded dial thermometer (0 to 140°F, -10 to 60°C)
- Inlet manifold piping
- Locking temperature regulators
- Recessed cabinet with hinged door and cylinder lock
- Factory assembled and tested



This product is certified to meet Low Lead requirements of wetted surface area containing less than 0.25% lead by weight

OPTIONS:

- SUFFIX CP – Chrome plated (Material finish may vary)
- SUFFIX BWE REC- Steel cabinet, baked white enamel recessed.
- SUFFIX STSTL REC- Stainless Steel recessed cabinet
- SUFFIX BWE EXP- Exposed cabinet, baked white enamel.
- SUFFIX STSTLEXP- Exposed cabinet, Stainless steel
- SUFFIX SEMI- Semi-recessed frame 4" deep
- SUFFIX VIEW- View port on door
- SUFFIX TC- Test connection on outside of exposed cabinets only and shipped loose
- SUFFIX IT- Inlet thermometers on outside of exposed cabinets only and shipped loose

Valve assembly is ASSE 1017 Certified 

Valve assembly is CSA Certified 

MINIMUM FLOW (GPM) (l/min)	SYSTEM PRESSURE DROP (PSIG)										PSI BAR
	5	10	15	20	25	30	35	40	45	50	
1.0 (3.8)	26 98	40 151	48 182	58 220	63 238	68 257	74 280	79 299	84 318	89 337	GPM l/min

+NOTE: The valve will maintain temperature with 0.5GPM flow from the domestic hot water loop when properly installed near the hot water source with a continuously operating recirculation pump.

NOTE: Flowrates will vary depending on existing field conditions. Leonard Valve Company always recommends using CASPAK® sizing software for proper valve sizing and model number applications.

Note: Leonard Valve Company reserves the right of product, or design modifications without notice or obligation.

CAUTION! All thermostatic water mixing valves have limitations. They will NOT provide the desired accuracy outside of their flow capacity range. Consult the Flow Capacity Chart and DO NOT OVERSIZE. Minimum flow must be no less than as indicated.

***NOTE:** A limit stop, set for 120°F (49°C), is simply a mechanical setting to prevent excessive handle rotation. If incoming water is hotter than 150°F (65.5°C), the temperature of the factory test, the valve when turned to full HOT may deliver water in excess of 120°F and the limit stop MUST BE RESET BY THE INSTALLER

Engineer's Approval

Job # _____

Arch/Eng. _____

Contractor _____

Note: The models shown represent Leonard Products which are believed to be equivalent in type and function to items specified. Leonard Valve Company is not responsible for errors or omissions due to differences in interpretations of information provided.



WARNING: This product can expose you to chemicals including lead, which is known to the State of California to cause cancer. For more information, go to www.P65Warnings.Ca.gov



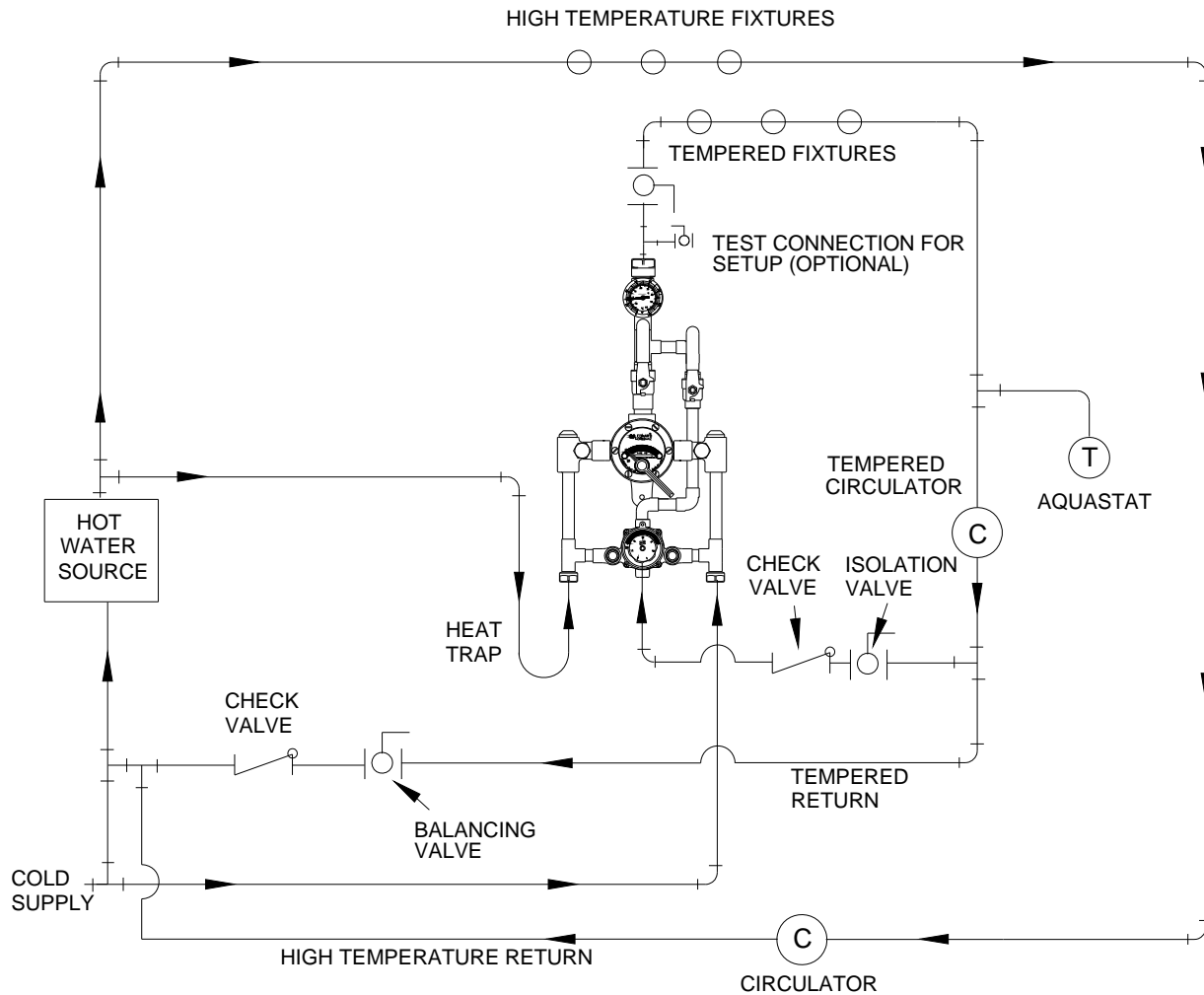
1360 Elmwood Avenue, Cranston, RI 02910 USA

Phone: 401.461.1200 Fax: 401.941.5310

Email: info@leonardvalve.com

Web Site: <http://www.leonardvalve.com>

PIPING METHOD #2, only for systems circulating 8 GPM or less. See Method #5 for circulated flow rates above 8 GPM.



1360 Elmwood Avenue, Cranston, RI 02910 USA
 Phone: 401.461.1200 Fax: 401.941.5310
 Email: info@leonardvalve.com
 Web Site: <http://www.leonardvalve.com>